



HARDEN YOUR ATTACK SURFACE

F-Secure Elements
Vulnerability Management

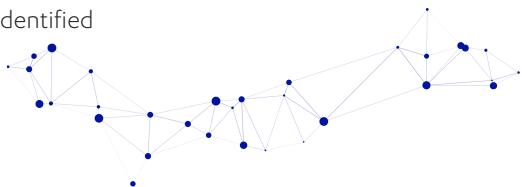


ADVERSARIES DON'T NEED MANY VULNERABILITIES – ONE IS ENOUGH.



8000 known and disclosed
vulnerabilities each year

Every **90** minutes a new security
vulnerability is identified



That is an average of **7**
vulnerabilities per asset across a
typical IT environment

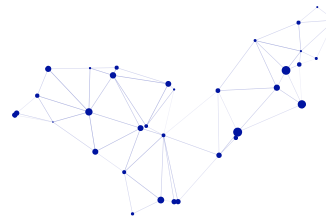


50-300 critical
vulnerabilities exploitable depending
on industry

It takes **15** days in the average that a
vulnerability is exploited



It takes an average of **103** days
until known security vulnerabilities are
remediated



VULNERABILITIES AND THEIR EXPLOITATION ARE STILL THE ROOT CAUSE OF MOST BREACHES

- There are many ways to breach corporate defenses, but web applications are by far the most vulnerable part of your network.
- The majority of exploits are based on vulnerabilities already known to security professionals for at least one year.
- Only constant scanning and ruthless control can help you find vulnerabilities before anyone does.
- Rapidly changing, complex business IT environments lead to a broad attack surface



That's where F-Secure Elements Vulnerability Management comes in.

MANAGE BUSINESS-CRITICAL VULNERABILITIES

F-Secure Elements Vulnerability Management is a turnkey, enterprise-grade vulnerability scanning and management platform.

It combines IT asset discovery and inventory, identification and management both internal and external threats.

Report on risks and conduct compliance to current and future regulations (such as PCI and GDPR compliance).

Vulnerability Management gives you visibility into shadow IT: map your full attack surface and respond to critical vulnerabilities associated with cyber threats.



- 1 Explore beyond your network**
Identify risks and potentially vulnerable external connections



- 2 Discover network assets**
Map all assets on the application layer



- 3 Scan systems and applications**
Protect endpoints. Scan assets for vulnerabilities. Scan remote PCs outside your network.



- 4 Manage vulnerabilities**
Central vulnerability management and security alerting and forensics



- 5 Assess and verify**
Track all changes with PCI-compliant vulnerability scanning



- 6 Report status**
Prepare standardized and custom reports on risk and compliance

WHAT IS YOUR ATTACK SURFACE?

The best threat response is to predict and map your cyber security threats. No other technology does that better than vulnerability management.

An organization's attack surface crosses all network infrastructures, software, and web applications internally and in the global Internet. It includes an understanding of all points of interaction.

Information security managers need to be able to approach vulnerability assessment from several perspectives in order to get an accurate assessment of risks, minimize security threats, and maintain compliance.

Unlike any other vulnerability solution on the market, F-Secure Elements Vulnerability Management features web crawling technology, called Internet Asset Discovery, that also covers the deep web. Vulnerability Management allows you to easily browse through all targets to quickly identify risks and potentially vulnerable connections, and to expand the possible attack surface beyond your own network.





IDENTIFY AND EXPOSE THE POSSIBLE THREATS

Successful intellectual property and brands often make companies the target for fraudulent or malicious activities. F-Secure Elements Vulnerability Management can generate a threat assessment report of activities including brand violation or phishing sites intended to scam or infect visitors.

Vulnerability Management identifies your organization's assets where they are vulnerable. You can minimize your attack surface while reducing risk.

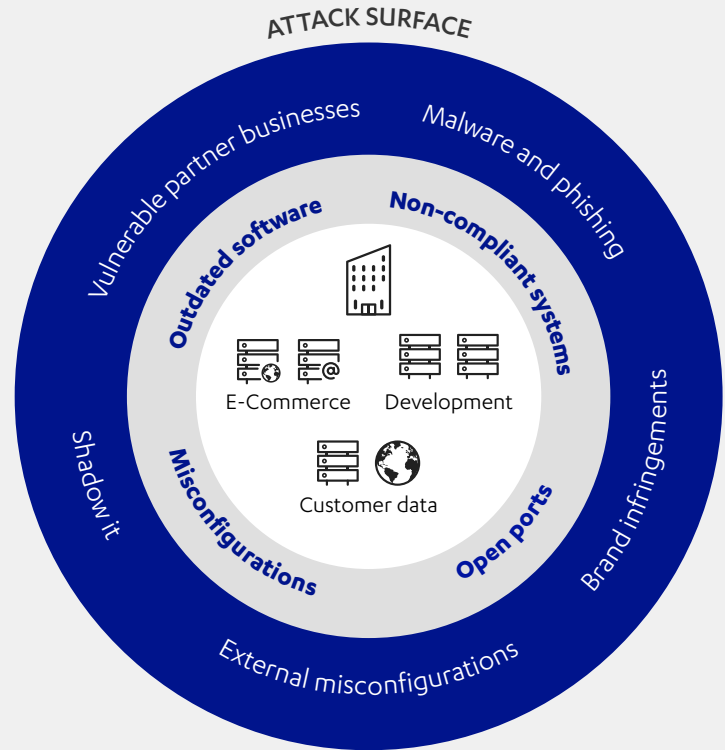
With Vulnerability Management, your IT security team maps your organisation's attack surface in the aggregate of:

- all known, unknown, and potential vulnerabilities critical to business
- controls across all software, hardware, firmware, and networks
- shadow IT, external misconfigured systems, malware websites, website-linked hosts
- partner and contractor security entropy
- brand infringements and phishing



THE REAL ATTACK SURFACE

- What you didn't want to know you have
- What you didn't know you have
- What you know you have



RISK MANAGEMENT WITH F-SECURE ELEMENTS VULNERABILITY MANAGEMENT

✓ **Comprehensive visibility**

Effective security mapping through precise discovery and mapping of all assets, systems, and applications on the network and beyond.

✓ **Streamlined productivity and security management**

Quickly address problems across multiple domains with an efficient service workflow, including vulnerability monitoring, automated scheduled scans, and ticketing for prioritized remediation and verification.

✓ **Reporting on risk**

Produce reports with credible information about your organization's security posture over time. Show and justify how IT security enables business continuity.

✓ **Reduced costs**

Vulnerability management can lower the cost of security significantly. It's less costly to deal with security before serious problems than during a crisis or incident recovery. Additionally, cloud resources allow organizations to lower their expenses.



F-SECURE ELEMENTS – ONE PLATFORM FOR ALL YOUR SECURITY NEEDS

F-Secure Elements Vulnerability Management is available as a standalone solution or as an integral capability in the modular F-Secure Elements cyber security platform.

Try it yourself today



ABOUT F-SECURE

Nobody has better visibility into real-life cyber attacks than F-Secure. We're closing the gap between detection and response, utilizing the unmatched threat intelligence of hundreds of our industry's best technical consultants, millions of devices running our award-winning software, and ceaseless innovations in artificial intelligence. Top banks, airlines, and enterprises trust our commitment to beating the world's most potent threats.

Together with our network of the top channel partners and over 200 service providers, we're on a mission to make sure everyone has the enterprise-grade cyber security we all need. Founded in 1988, F-Secure is listed on the NASDAQ OMX Helsinki Ltd.

f-secure.com/business | twitter.com/fsecure | linkedin.com/f-secure

